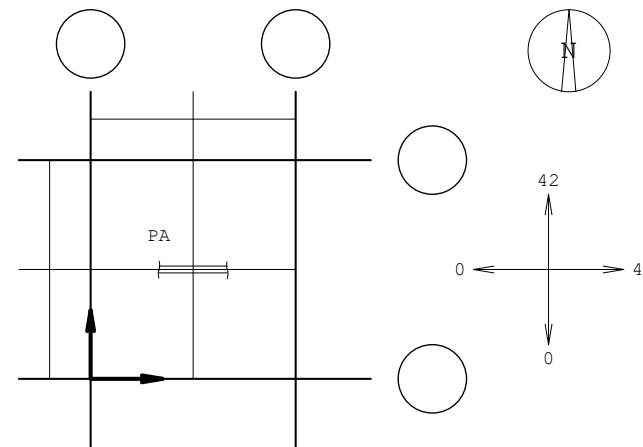
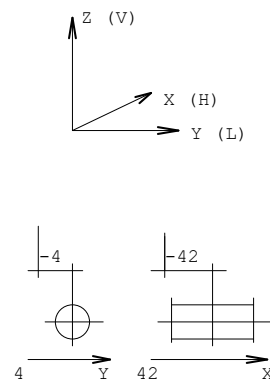
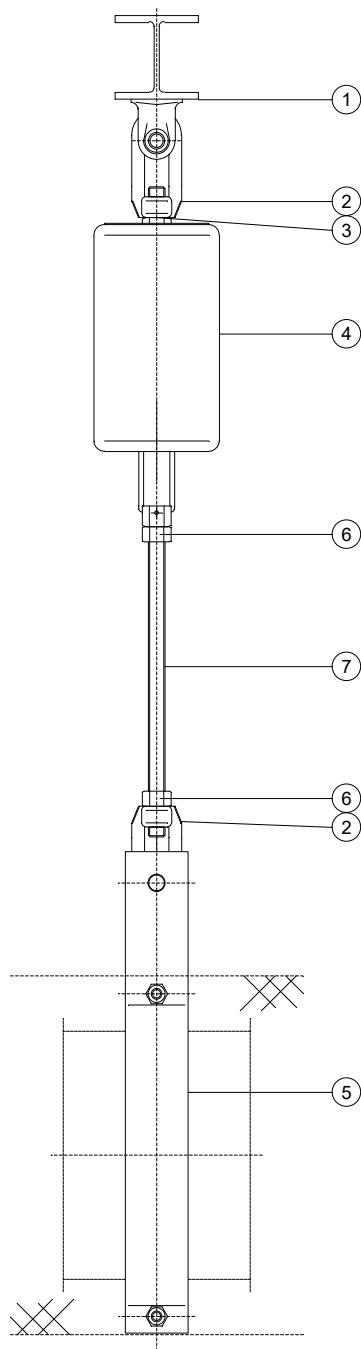
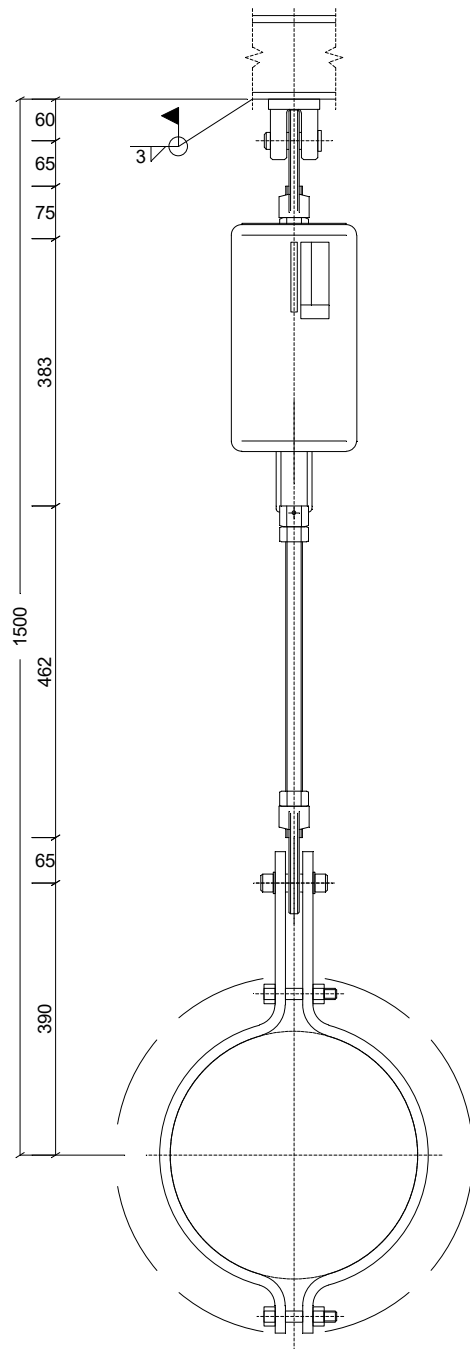


C:\Users\Public\Documents\LISEGA\LICAD\Projects\Default\LICADPRJDB.FDB (Port for private FB: 27400) - Project : Default project



7	Threaded rod	675213	(462)	1	1.45	S355J2
6	Hexagonal nut	635928	M24	2	0.22	Gr. 8
5	Three bolt clamp	433619	D355.6	1	19.00	S235JR
4	Variable spring hanger	215218		1	20.50	
3	Threaded stud	675113	75	1	0.22	S355J2
2	Eye nut	605912		2	1.60	P 250 GH
1	Weld-on clevis /w bolt	735913		1	2.10	S355J2
						45.09

Pos.	Description	Type	mm	Qty	kg	Material
PRORACUNSKA TACKA 170						
Input F(H) =		1503 kg				
F(H) =		1524 kg				
F(C) =		1748 kg				
F(P) =		1748 kg				
F(Hy)=		377 kg				
later.=		4 mm				
horiz.=		42 mm				
vert.=		16 mm				
Ø OD =		355.6 mm				
Insul=		80 mm				
Temp.=		152 °C				
ΔF =		15 %				
Spring rate =		13.6 kg/mm				
tot Tvl =		100 mm				
Preset=		78 mm				
tri Tvl =		16.46 mm				
Tvl res dn/up=		22/62 mm				
				Customer : KRUSIK-VALJEVO:		
				LISEGA Offer N°: 0-8-0 0		
				P.O. N° :		
				LICAD dwg. no. 16-3-80074		
				Rev.		
				Order no.:		
				Project manager 28.3.2024.		
				Checked:		